

1 Port Eynon Point

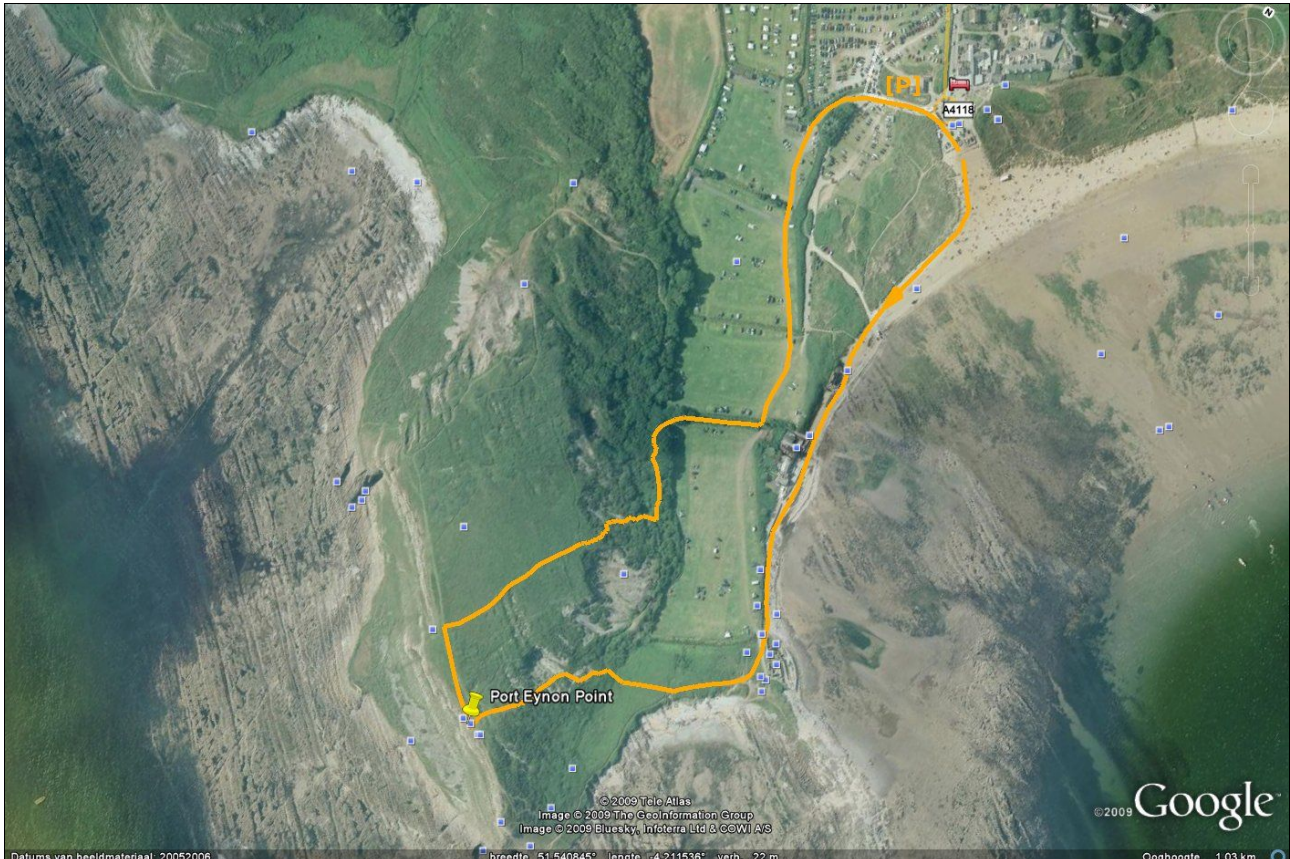
Port Eynon – Port Eynon Point

Starting point: Port Eynon, accessible via the A4118 from Swansea (distance Swansea – Port Eynon is about 26 km [Swansea, Wales – Great Britain])

Distance: 2 km

Difficulties: unmarked, yet easy to find route. Climb to the cliff quite taxing. Watch out during fog!

Why worth it?: Getting a breath of fresh air at the beach and on a high cliff with a beautiful view across the sea and the surrounding area.



ROUTE DESCRIPTION:

From the “Public Parking” (paid parking) we walk on to the beach. Here we go right (south) towards several typical shore houses. Further on several decayed houses (with information sign) follow. From here we climb the cliff. A stony path brings us zigzagging to the top (monument).

From here we follow the broad path across the grass in northern direction. After about 90 metres we go right and follow a narrower path through the grass. Mountain downwards (watch out: slippery stones) we reach dense overgrowth and then a T-branch: here we go left. We reach a camping and walk back to the parking lot (you can choose if you go via the beach or the camping terrain).

Route walked in 2006

Difficulty measurement:

- **1** short walk across even terrain. Distance till 5km across (asphalted/paved) roads in good

condition.

- 2 walk with several small climbs, till a distance of 10km, mainly roads in good condition.
 - 3 a longer walk till 15 km. Climbs and off-road routes possible. Good physical condition is necessary.
 - 4 long walk till 25km. Climbs and off-road routes highly probable.
 - 5 very long walk till 40km (or more). Climbs and off-road routes very likely.
-