

1 Naturlehrpfad Piffkar (1650m)

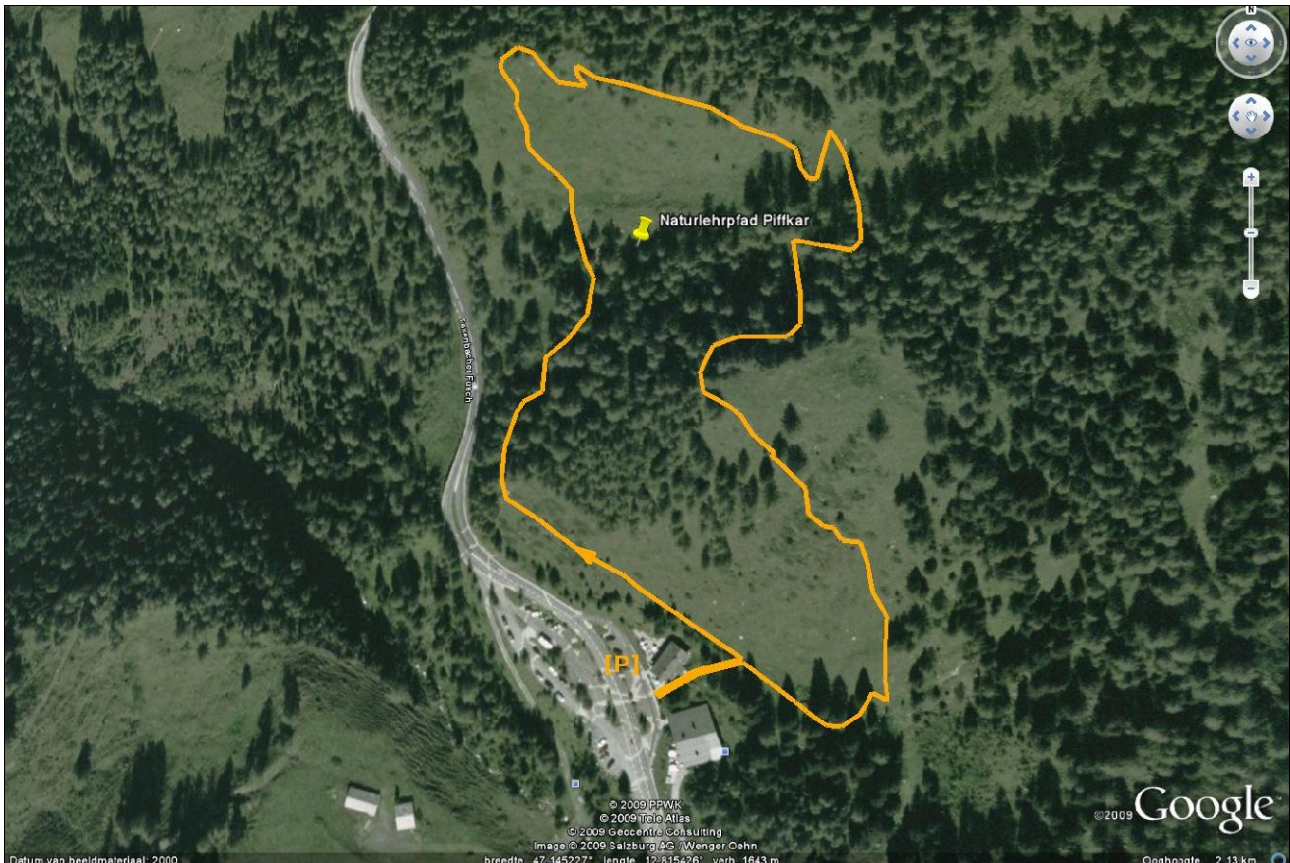
Rasthaus Piffkar – Naturlehrpfad – Rasthaus

Starting point: parking lot near Rasthaus Piffkar at the Grossglockner Hochalpenstrasse [Fusch am Glocknerstrasse 813m. – Salzburgerland]

Time: ½ hour.

Difficulties: good mountain path across alm meadows and through forests. Minor height differences.

Why worth it?: instructive intermezzo at an intermediate stop on the Hochalpenstrasse.



ROUTE DESCRIPTION:

From the parking lot at “Rasthaus Piffkar” we walk past the Rasthaus on the right hand side, go up some stairs and through a gate. On the left the “Naturlehrpfad” starts. Just follow the route with information signs (there are no exits or such on this path) and after a half an hour we find ourselves back at the gate.

Route walked in 2004

Rating Legend:

- **1** Moderately easy tour (also perfect for a late afternoon walk). 2 hours max.
- **2** With some physical condition, no difficulties. 1 to 3 hours max.
- **3** Average tour, a moderate, good physical condition is needed! 2 to 4 hours max.
- **4** Difficult tour. Sometimes you have to use your hands to climb (not all the way, just smaller parts). Between 3 to 6 hours.
- **5** Very difficult tour. Here you're at the boundary of "real" mountaineering. The "climbing factor" takes the overhand. Mostly between 5 and 7 hours.