

## **1** Mooshofalm (1538m)

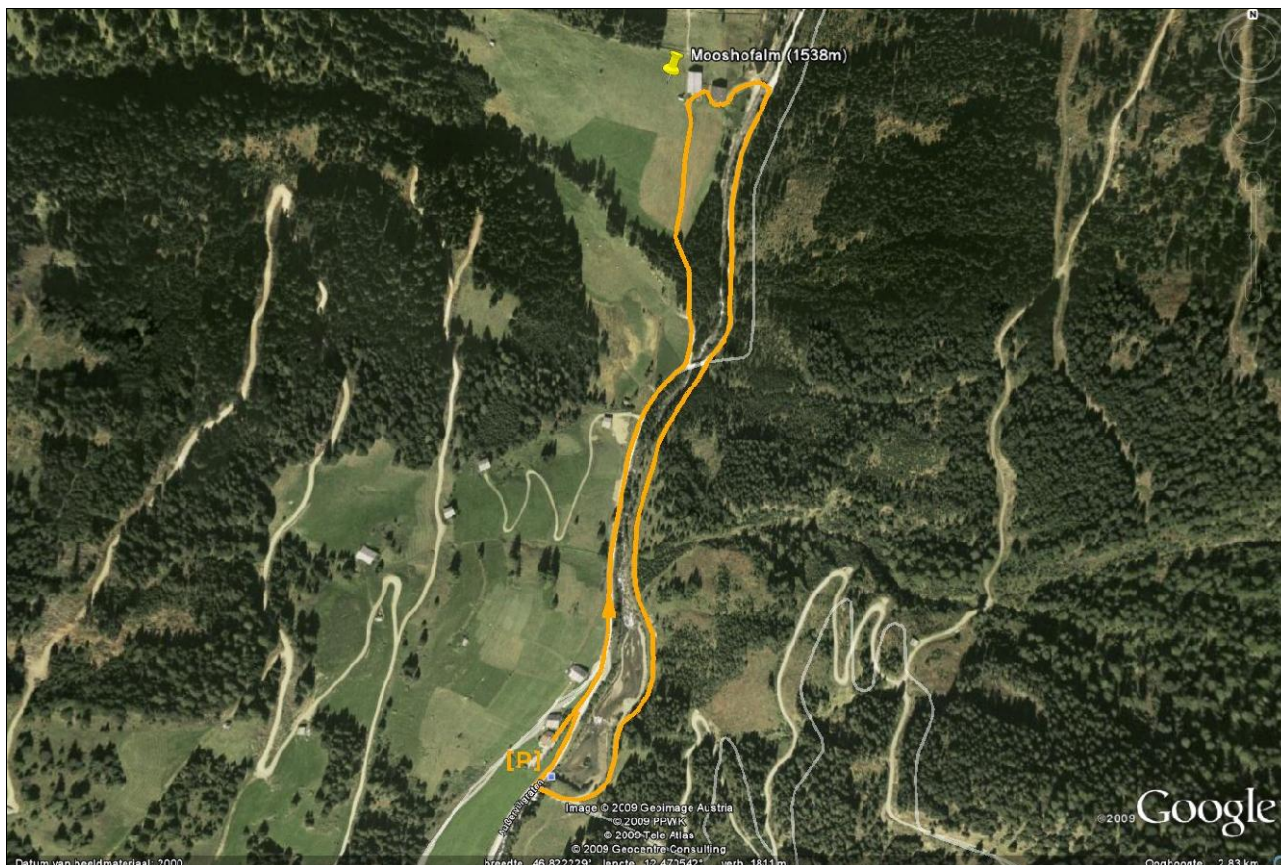
### **Imbiss Reiterstüb'n (1528m) – Mooshofalm (1538m) – Reiterstüb'n**

**Starting point:** Imbiss Reiterstüb'n (1528m) in the Winkeltal accessible via Ausservillgraten [Ausservillgraten, Bezirk Lienz – Ost-Tirol]

**Time:** ½ hour.

**Difficulties:** Short walk across supply roads with hardly any height difference.

**Why worth it?:** Beautiful view in a quiet valley.



#### **ROUTE DESCRIPTION:**

From the parking lot of “Imbiss Reiterstüb'n” we walk towards the main road. Here we go in to the valley (the asphalted road passes on to an unpaved road). After several minutes, right before the bridge across the river “Sille”, we take a left on to an (unpaved) road. Through a bit of forest we soon reach the quiet “Mooshofalm” with chapel (1538m).

In between the buildings we walk until we reach a bridge across a river. Across the bridge, going right, following the broad supply road. Before the next bridge we keep left (not crossing the bridge): across a path we reach a small lake with island. Passing it we go right across the bridge and then right again to return to the Reiterstüb'n.

*Route walked in 2005*

---

Difficulties Legend:

- **1** Moderately easy tour (also perfect for a late afternoon walk). 2 hours max.

- **2** With some physical condition, no difficulties. 1 to 3 hours max.
  - **3** Average tour, a moderate, good physical condition is needed! 2 to 4 hours max.
  - **4** Difficult tour. Sometimes you have to use your hands to climb (not all the way, just smaller parts). Between 3 to 6 hours.
  - **5** Very difficult tour. Here you're at the boundary of "real" mountaineering. The "climbing factor" takes the overhand. Mostly between 5 and 7 hours.
-