

2 Königsleiten (2315m) – Falschriedel (2420m)

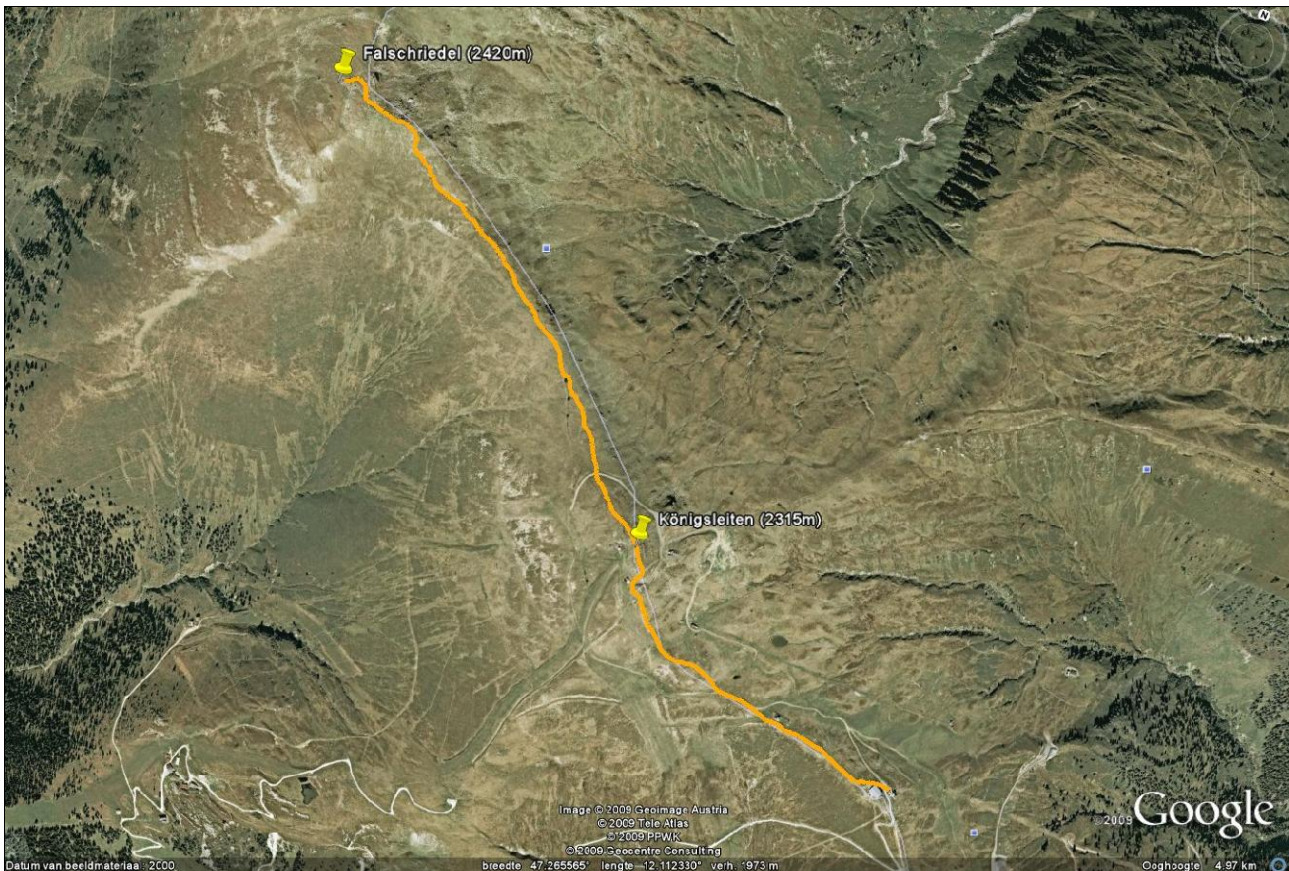
Almdorf Königsleiten – Königsleiten Bergbahn – Bergrestaurant (2160m) – Königsleiten (2315m) – Sattel Scharte (2247m) – Falschriedel (2420m)

Starting point: Mountain restaurant Königsleiten, accesible via the Königsleiten Bergbahn from Almdorf Königsleiten (1585m). [Krimml (1067m), Pinzgau – Salzburgerland]

Time: 2 hours.

Difficulties: Border tour Salzburgerland / Tirol. Well marked paths. From Königsleiten a descent first, then climb to Falschriedel. Sometimes sturdy climb.

Why worth it?: Because of the magnificent view of the Hohe Tauern.



ROUTE DESCRIPTION:

From the mountain station we walk past the right-hand side of the mountain restaurant up in western direction. We decide to not use the supply road, but the path next to the meadow fence. Before us we can already see the top “Königsleiten” (2315m). First towards mast, than up a bit towards the mountain station of a ski lift more steeply. Pass it on the right and across a narrow path to the top.

Past the top we walk on in north-western direction. We descend a bit first and cross a supply road. Straight ahead we can see our 2nd goal of this trip: “Falschriedel” (2420m), but first we descnd towards the lowest point: “Sattel Scharte” (2247m). Now the sometimes steep but nice climb to the top follows. The top is marked by 2 “Steinmännchen”.

We go back the way we came.

Route walked in 2004

Difficulties Legend:

- **1** Moderately easy tour (also perfect for a late afternoon walk). 2 hours max.
 - **2** With some physical condition, no difficulties. 1 to 3 hours max.
 - **3** Average tour, a moderate, good physical condition is needed! 2 to 4 hours max.
 - **4** Difficult tour. Sometimes you have to use your hands to climb (not all the way, just smaller parts). Between 3 to 6 hours.
 - **5** Very difficult tour. Here you're at the boundary of "real" mountaineering. The "climbing factor" takes the overhand. Mostly between 5 and 7 hours.
-

© 2009 travellernotes.info