

2 Golzentipp (2317m)

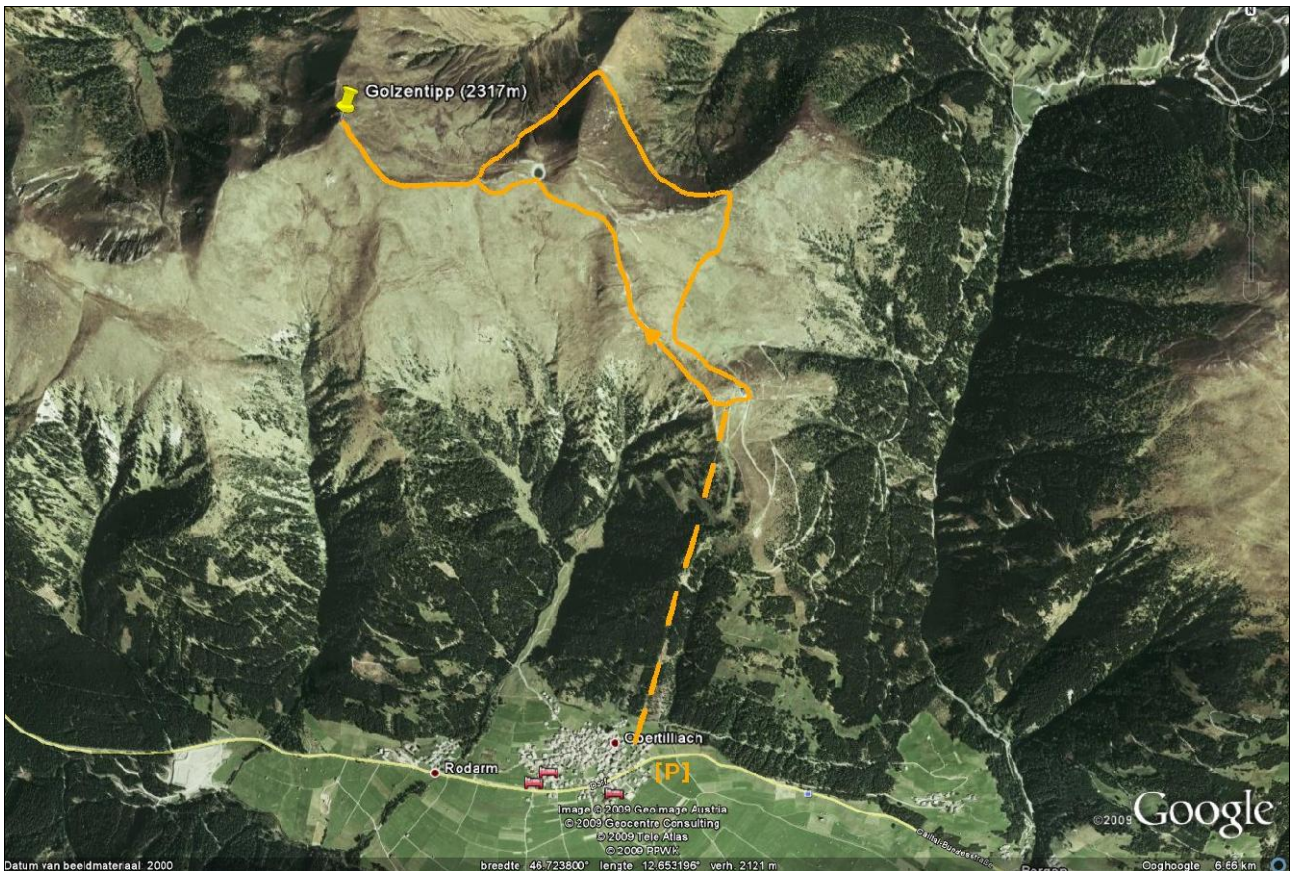
Obertilliach – Golzentipp bergbahn – Conny Alm (2050m) – Joch See – Joch (2214m) – Golzentipp (2317m) – Morgenrastl (2108m) – Conny Alm

Starting point: Conny Alm (2050m), accessible using the Golzentipp Bergbahn (chair lift) from Obertilliach (1450m) [Tiroler Gailtal, Bezirk Lienz – Ost-Tirol]

Time: 2 – 2¼ hours.

Difficulties: Good mountain paths and well marked. Climb across a ski ring is quite intense, after that pleasant ascents and descents. Pay attention with orientation during mist!

Why worth it?: Simple but beautiful mountain top. The return route via Morgenrastl is pleasantly quiet.



ROUTE DESCRIPTION:

With the chair lift we go from Obertilliach to the “Conny Alm” (2050m). Here we begin with the route across a ski ring (partially going up steeply), red-white-red markings (road sign “Golzentipp, road no. 44” at the mountain station of the chair lift).

After a climb we walk left underneath the mountain station of a ski lift, after which the “Joch See” soon follows. We continue our route upwards towards a fork towards “Kofelspitze”. Shortly thereafter we reach a “Joch” at 2214m height (sign): on our left side we see the “Kutteschupfen” (cabins). In western direction we can already see our goal: the mountains cross of the Golzentipp. A well worn path brings us to the top in a reasonable amount of time.

The return route we follow back to the fork towards “Kofelspitze”. Here we take a left, in north-eastern direction. A beautiful path descends across the alp until we reach a Joch named “Morgenrastl” (2108m). From here we follow a similar quiet path in south-eastern direction

gradually ascending back towards the Conny Alm (road no. 44B, red-white-red markings). This path goes towards a mountain ridge in an arc. Once at the top of the mountain ridge we look out on the Conny Alm. Shortly keep to the right and then cut off to the left across the alp towards the valley station of a ski lift. Then a couple of minutes across a supply road towards the Conny Alm Hütte and the mountain station of the chair lift.

Route walked in 2005

Difficulties Legend:

- **1** Moderately easy tour (also perfect for a late afternoon walk). 2 hours max.
- **2** With some physical condition, no difficulties. 1 to 3 hours max.
- **3** Average tour, a moderate, good physical condition is needed! 2 to 4 hours max.
- **4** Difficult tour. Sometimes you have to use your hands to climb (not all the way, just smaller parts). Between 3 to 6 hours.
- **5** Very difficult tour. Here you're at the boundary of "real" mountaineering. The "climbing factor" takes the overhand. Mostly between 5 and 7 hours.