

1 Buchau Hütte (1685m)

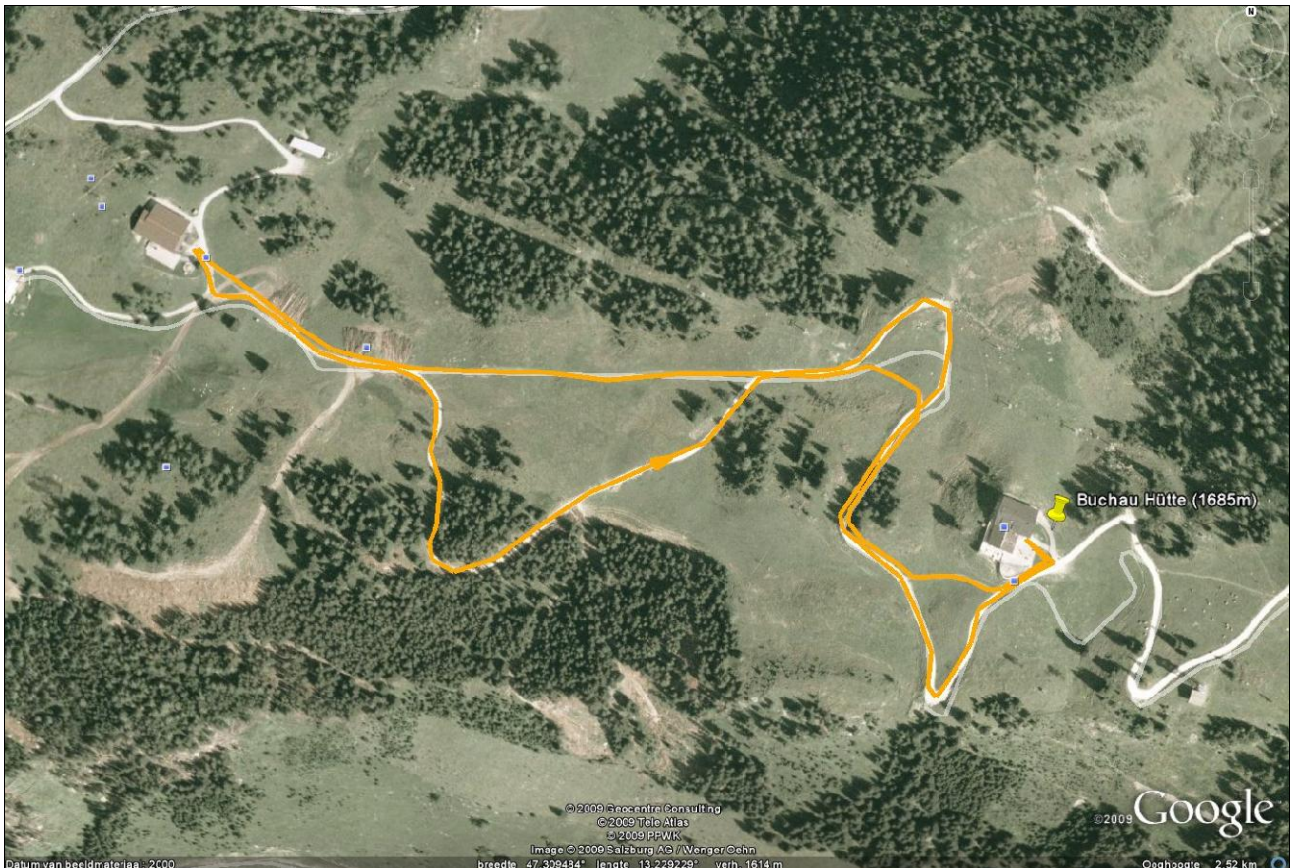
Alpendorf – Alpendorf Bergbahnen – Obergassalm (1600m) – Buchau Hütte (1685m)

Starting point: parking lot at the Alpendorf Bergbahnen in Alpendorf (726m) [St. Johann im Pongau – Salzburgerland]

Time: ¾ hour.

Difficulties: Short walk across dirt paths and mountain meadows.

Why worth it?: Magnificent view across the wide valley and the villages located almost a 1000m lower.



ROUTE DESCRIPTION:

From the mountain station of the bergbahn we can already see the “Buchau Hütte”. We follow a wide supply road up the mountain. In turns we reach the cabin. For the descent we choose to use paths across the mountain meadows so we can truncate the supply road several times.

Route walked in 2004

Difficulties Legend:

- **1** Moderately easy tour (also perfect for a late afternoon walk). 2 hours max.
- **2** With some physical condition, no difficulties. 1 to 3 hours max.
- **3** Average tour, a moderate, good physical condition is needed! 2 to 4 hours max.
- **4** Difficult tour. Sometimes you have to use your hands to climb (not all the way, just smaller parts). Between 3 to 6 hours.

- **5** Very difficult tour. Here you're at the boundary of "real" mountaineering. The "climbing factor" takes the overhand. Mostly between 5 and 7 hours.